



INSTALLATION INSTRUCTIONS

Accessory
CARGO AREA COVER

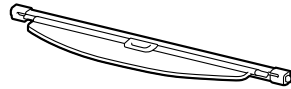
Application
2013 RDX

Publications No.
BII 13449
Issue Date
MAR 2012

Put this information in the glove box with the vehicle owner's manual.

PARTS LIST

Cargo area cover

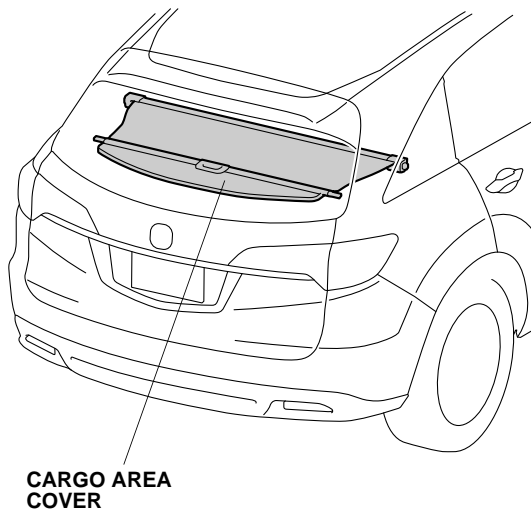


TOOLS AND SUPPLIES REQUIRED

Flat-tip screwdriver

Shop towel

Illustration of the Cargo Area Cover in the Vehicle

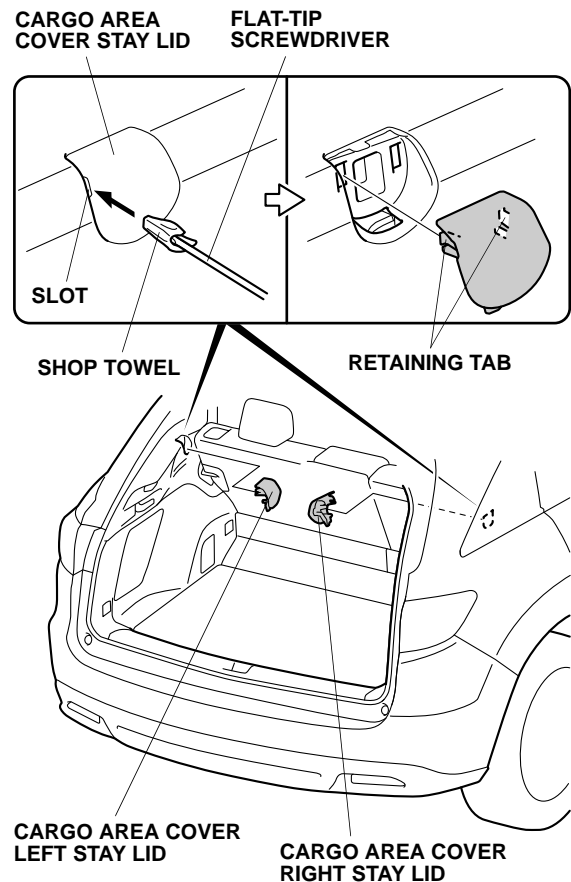


INSTALLATION

Client Information: The information in this installation instruction is intended for use only by skilled technicians who have the proper tools, equipment, and training to correctly and safely add equipment to your vehicle. These procedures should not be attempted by "do-it-yourselfers."

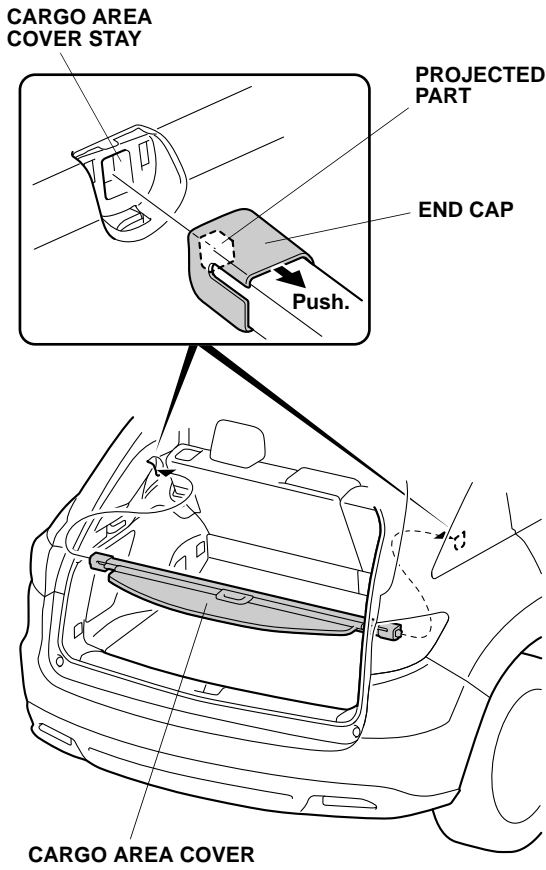
NOTE: Be careful not damage the paint finish.

1. Open the tailgate. Using a flat-tip screwdriver wrapped with a shop towel, remove the cargo area cover left stay lid (two retaining tabs). Be careful not to damage the left rear side lining.

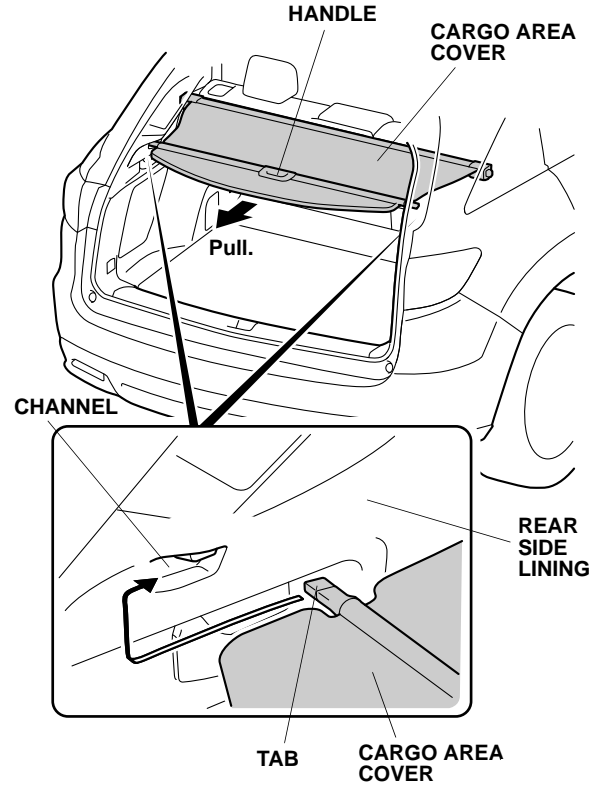


2. Remove the cargo area cover right stay lid the same way.

3. Push the end cap on the cargo area cover inward and insert the projected part of the end cap into the cargo area cover stay in the rear side lining. Insert the other end into the other side the same way.



4. Pull out the cargo area cover and secure the two tabs into the channels in the rear side lining as shown.



5. Store the cargo area cover stay lids (removed in steps 1 and 2) in the glove box.