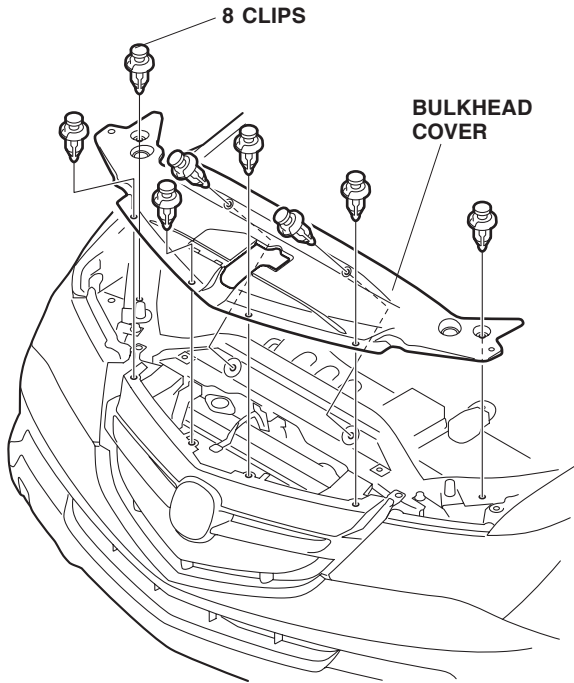
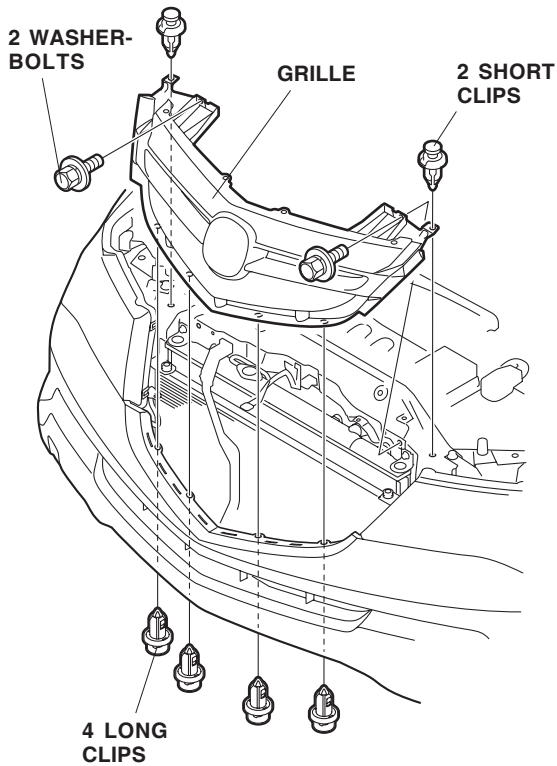




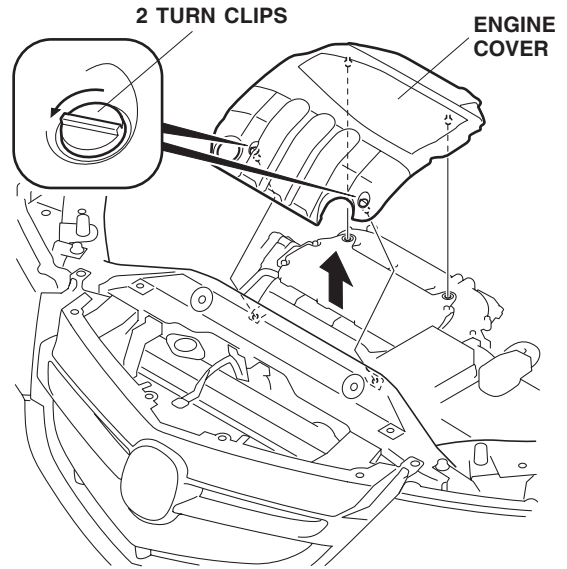
3. Remove the bulkhead cover (eight clips).



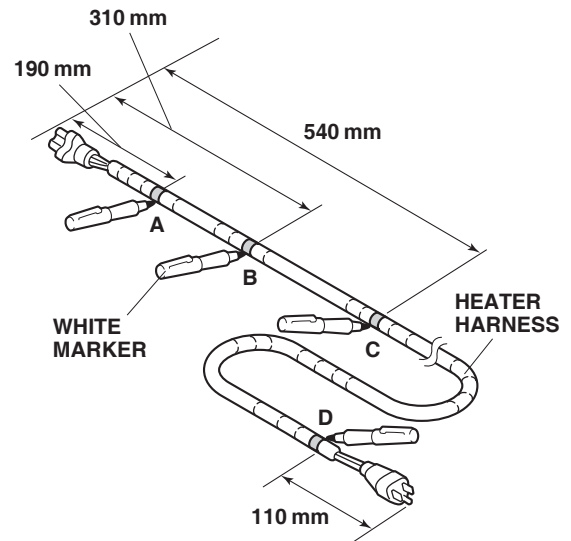
4. Remove the grille (two washer-bolts, four long clips, and two short clips).



5. Remove the engine cover (two turn clips).

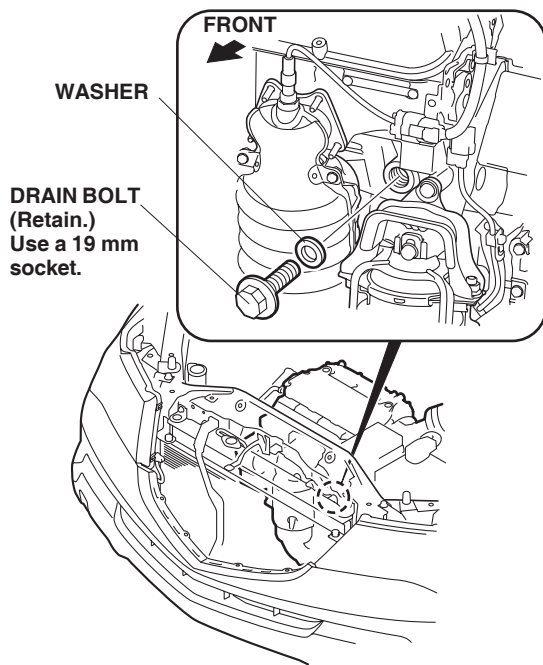


6. Using a tape measure, measure and mark the heater harness at the A, B, C, and D points shown.

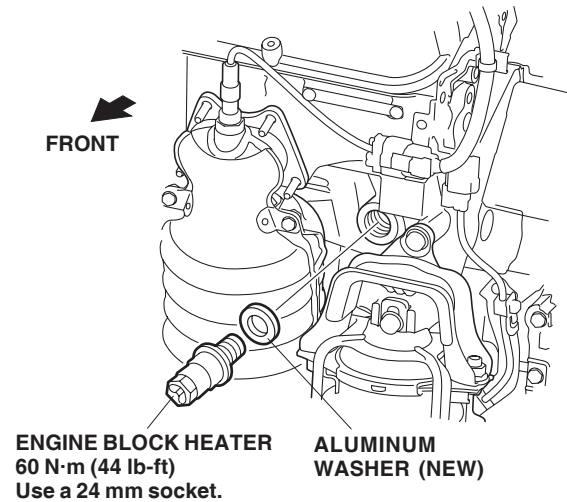


- From the top, locate and remove the engine block drain bolt and washer. Coolant remaining in the engine jackets may flow out of the bolt hole when the bolt is removed.

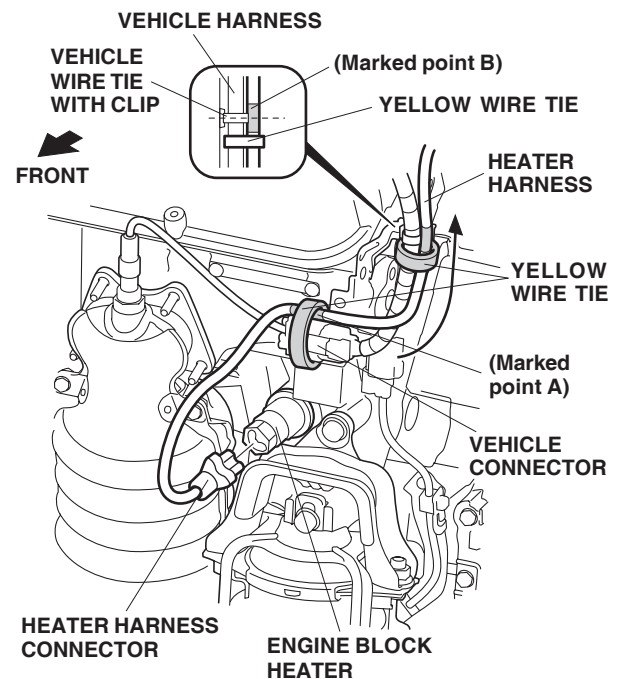
NOTE: Retain the bolt in case the block heater is removed. (A new washer should be used when the bolt is reinstalled.)



- Install the new aluminum washer and the engine block heater into the bolt hole using a 24 mm socket and a torque wrench. Torque the engine block heater to 60 N·m (44 lb-ft).

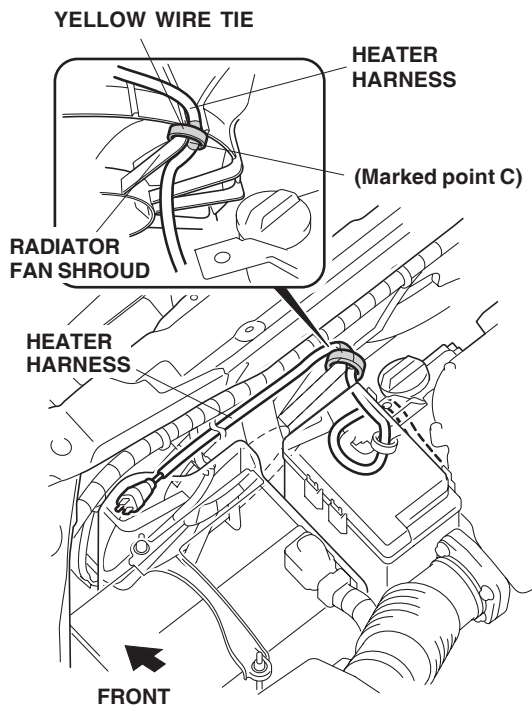


- Route the heater harness down to the engine block heater. Connect the heater harness connector to the engine block heater.

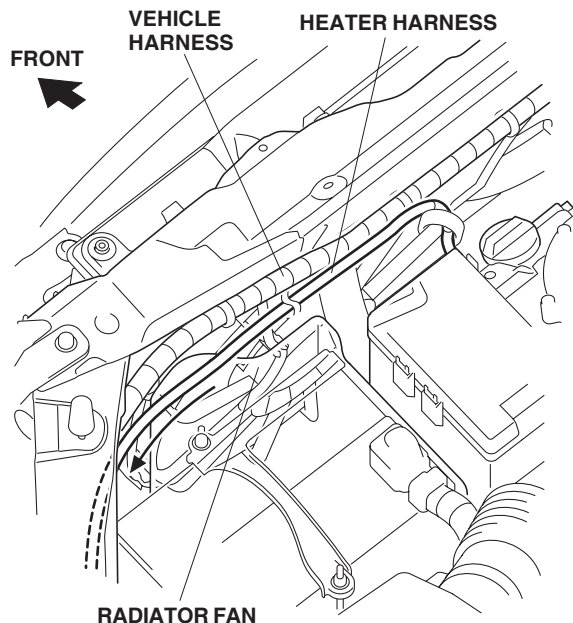


- Secure the heater harness to the vehicle connector with one yellow wire tie at the marked point A. Secure the heater harness to the vehicle harness with one yellow wire tie at the marked point B.

- Secure the heater harness to the radiator fan shroud with one yellow wire tie at the marked point C.



- Route the heater harness to the left side of the radiator fan along the vehicle harness.



- Route the heater harness along the vehicle harness and out the gap in the bulkhead frame as shown.

